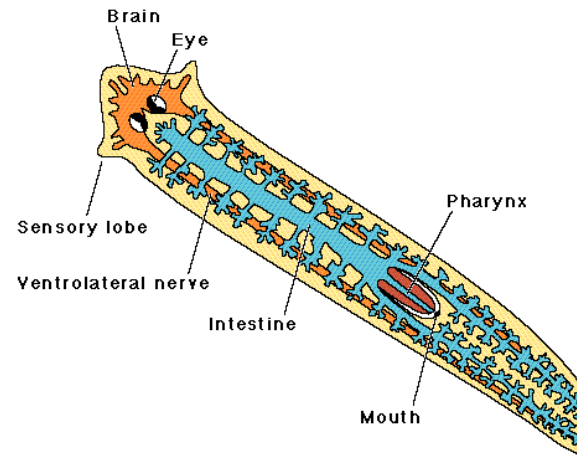


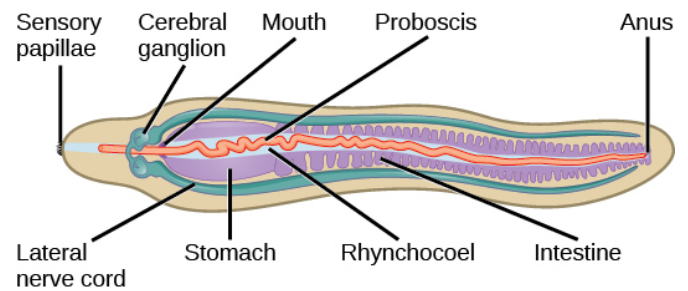
## Phylum Platyhelminthes

- Bilateral
- Mouth but no anus
- flattened body
- simple brain, nerve cord
- lacks coelom (solid body type)
- sense organs on head
- sexual and asexual
- turbellarians, flukes, tapeworms
- Turbellarians- free living, carnivores (planaria)
- Flukes- parasitic, sexual and asexual
- tapeworms-parasitic, with long segmented bodies
- more complex than cnidarians



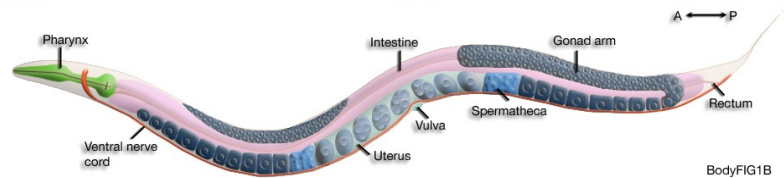
## Phylum Nemertea:

- lacks coelom
- bilateral symmetry
- ciliated, with mucous glands
- Digestive tract, mouth - anus
- nerve cord
- closed circulatory system



## Phylum Nematoda:

- no circulatory system
- round worms
- bilateral symmetry
- parasitic and free-living
- unsegmented, cylindrical
- mouth - anus with an intestine
- nerves, no brain
- no circulatory system
- male and females



## Annelida:

- Bilateral symmetry
- mouth and anus
- segmented body
- earthworms, polychaets

**Tissue Layers and Cavities**

**Body Plan Type**

**Example**

